

Kiewa River Basin

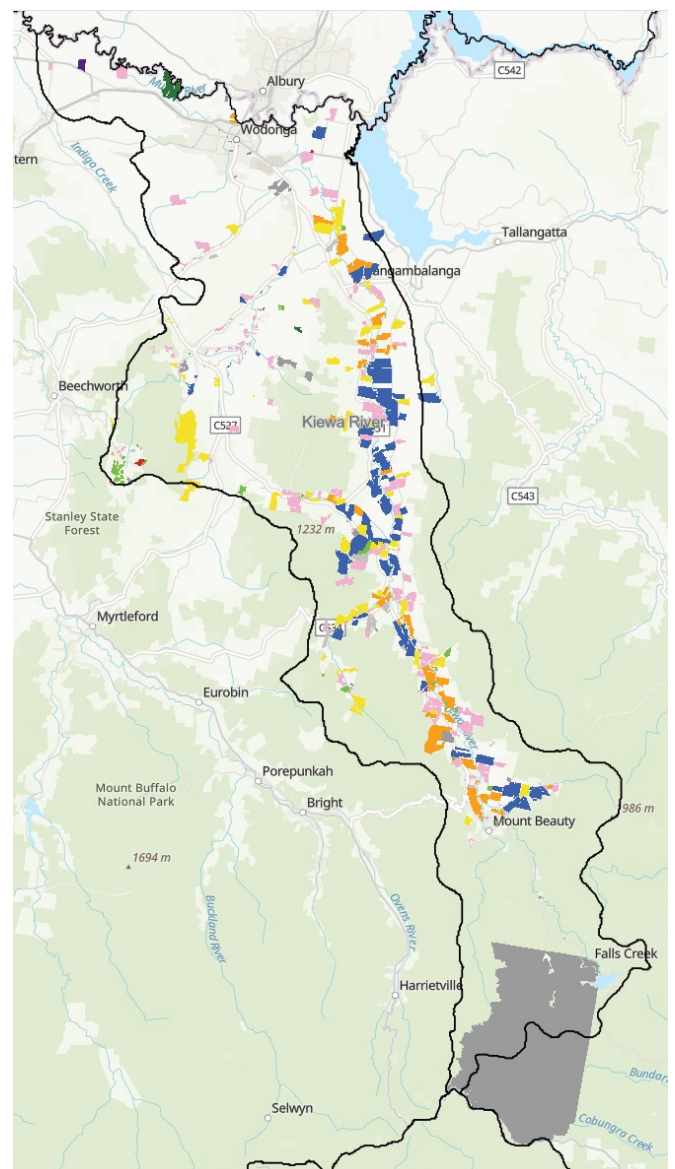
Unregulated and Groundwater Diversions 2023/24

The Kiewa River basin spans from the Mt Hotham Alpine Resort in the south to the River Murray near Wodonga in the north of the catchment. Covering an area of 1,710 square kilometres, the main tributaries are the Yackandandah, Mountain, Glen, Running and Middle Creeks. There are five storages at the top of the catchment which are utilised to produce electricity through the Kiewa Hydroelectric Scheme. Downstream of the power stations, the river and its tributaries are unregulated.

Throughout the catchment, there are landowners that divert water from the unregulated sections of the rivers and creeks and from the groundwater system.

As part of the Land and water use mapping project, assessment of these unregulated water users was undertaken to determine the amount of water used, what industry the water was used in and the number of Take and Use Licences within the catchment. Future data collection will provide an opportunity to then analyse changes in these criteria and inform future decision making across the basin for both land use and water use as well as industry types. The industry types are consistent with the Regulated Diversion project and the GMID project.

FIGURE 1: KIEWA RIVER BASIN



INDUSTRY TYPES:

- 
 Cropping
- 
 Dairy (Combined)
- 
 Energy
- 
 Glasshouse Plant / Vegetable
- 
 Horses
- 
 Horticulture Annual
- 
 Horticulture Perennial
- 
 Intensive Animals
- 
 Livestock Non Dairy
- 
 Rural Lifestyle/ Residential
- 
 Other
- 
 Not Irrigated

Kiewa River Basin Results 2023/24

The results of the inaugural data collection provides an excellent basis to build on into the future.

For the Kiewa River basin, there were 563 take and use licences covering 28,490 ha, where over 5.4 gigalitres (GL) of water was used. Further details are provided in Table 1.

TABLE 1: SUMMARY OF AREA, WATER USE AND TAKE AND USE LICENCES

KIEWA RIVER BASIN LAND USE	AREA (ha)	WATER USAGE (ML)	TAKE AND USE LICENCES
Cropping	4,009	704	63
Dairy (Combined)	8,569	2,892	73
Energy	—	—	—
Glasshouse Plant/Vegetable Production	352	4	6
Horses	—	—	—
Horticulture – Annual	57	29	3
Horticulture – Perennial	806	115	42
Intensive Animals	82	2	1
Livestock – Non Dairy	4,862	203	61
Rural Lifestyle/Residential	5,693	573	258
Other	3,312	851	42
Not irrigated	748	54	14
TOTAL	28,490	5,427	563

Please note: Licence area represents the parcels of land/title to which the licenced is attached and not the irrigation footprint.

Area (ha)

The total area with a Take and Use Licence for the Unregulated diversions and Groundwater users in the Kiewa River basin was 28,490 ha, with Dairy (Combined) and Rural lifestyle / Residential representing the largest areas at 8,569 ha and 5,693 ha respectively and representing 50% of the Take and Use Licence area. The total licence area represents the parcels of land/title to which the licenced is attached and not the irrigation footprint.

Water Use (ML)

The total water use for the Unregulated diversions and groundwater users in the Kiewa River basin was just over 5.4 GL, with Dairy and Other enterprises using most of the water at 3.7 GL, representing 69% of the total water used. At the top of the catchment the Falls Creek and Mt Hotham Ski fields are the main users of water in the “Other” category.

Take and Use Licences

The total number of Take and Use Licences for the Unregulated diversions and Groundwater users was 563. Rural lifestyle/ Residential and Dairy enterprises held the highest number of licences at 258 and 73 respectively, representing 59% of Take and Use Licence holders.